



1

---

---

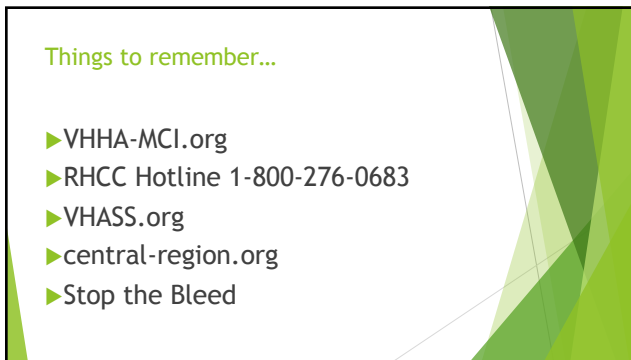
---

---

---

---

---



2

---

---

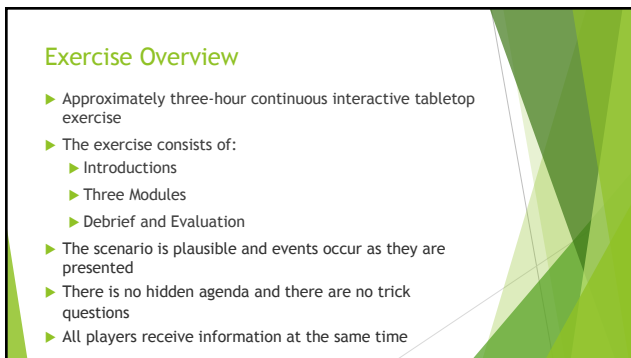
---

---

---

---

---



3

---

---

---

---

---

---

---

### Scope

- ▶ The exercise includes discussions about public information sharing and communication processes.
- ▶ Focus on the role of your organization(s) in response to an active shooter, as well as coordination between regional and local level agencies.

4

---

---

---

---

---

---

---

### Core Capabilities

- Foundation for Healthcare and Medical Readiness
- Healthcare and Medical Response Coordination
- Continuity of Healthcare Service Delivery

5

---

---

---

---

---

---

---

### Objective one/Foundation for Healthcare and Medical Readiness

- ▶ Ensure that Emergency Operations Plans (EOPs) are current and correct.
- ▶ Ensure that incident management and operational procedures have been exercised and documented.

6

---

---

---

---

---

---

---

### Objective two/Healthcare and Medical Response Coordination

- Maintain situational awareness by gathering and sharing real-time information related to the emergency and the current state of the health care delivery system through coordination with the healthcare coalition.
- Exercise public information/warning functions along with utilizing the various forms of media to communicate.

---

---

---

---

---

---

---

7

### Objective three/Continuity of Healthcare Service Delivery

- Ensure key organization's functions are maintained throughout the emergency including the provision of care to existing and possibly new patients as well as staff and family members accompanying patients.

---

---

---

---

---

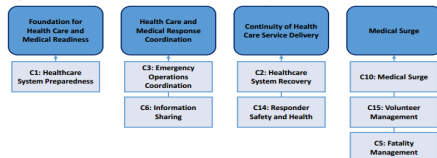
---

---

8

### ASPR 2017-2022 healthcare preparedness and response capabilities

Figure 1: Crosswalk of the 2012 and 2017-2022 Capabilities




---

---

---

---

---

---

---

9

### Ground Rules

- ▶ Do NOT critique the scenario
- ▶ Draw from your previous experience
- ▶ Do NOT assume information
- ▶ Participation is encouraged
- ▶ The facilitator's job is to help **you** come up with solutions

---

---

---

---

---

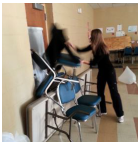
---

---

---

10

### Module One




---

---

---

---

---

---

---

---

11

### Module One Situation

- ▶ A maintenance staff member encounters a male in his 30's who is disheveled and appears agitated. He angrily tells the staff member that he is looking for someone, pushes the staff member to the ground, pulls a hand gun out of his pocket and shoots him before running into the building.
- ▶ He stops to jam the sliding doors shut using materials he pulled from his pockets.




---

---

---

---

---

---

---

---

12

### Module One Situation

- ▶ Once he secures the door, the assailant pulls an assault style rifle from his coat.
- ▶ He walks down the hall pushing down people he encounters who are trying to avoid him, shoots them as he screams that he is looking for someone named Emily.

13

---

---

---

---

---

---

---

### Module One Situation

- ▶ As he approaches a group of residents the shooter opens fire, striking more residents.
- ▶ He continues moving towards the dining room area, where he encounters additional residents and staff members at the elevators. Again, he fires his weapon, hitting residents and staff members.
- ▶ He grabs two residents and pulls them into an adjoining room. He barricades the door and closes the blinds.

14

---

---

---

---

---

---

---

### Module One Key Issues

- ▶ Hostile intruder situation
- ▶ Unknown injuries
- ▶ Gunman takes two residents hostage.

15

---

---

---

---

---

---

---

## Module One Discussion Questions




---

---

---

---

---

---

---

---

16

## Module Two




---

---

---

---

---

---

---

---

17

## Module Two Situation

- ▶ 8:35am
  - ▶ Cardiac arrest call received
- ▶ 8:36am
  - ▶ Local media is beginning to arrive on scene
- ▶ 9:00am
  - ▶ Residents who are sheltering in place want more information about what to do
  - ▶ Phone lines are overwhelmed
- ▶ 9:02am
  - ▶ Medical emergency call received

---

---

---

---

---

---

---

---

18

### Module Two Key Issues

- ▶ Ongoing hostage situation
- ▶ Multiple victims from the incident, coupled with other non-event related medical calls
- ▶ Information is needed to share with staff and the residential community
- ▶ Media is arriving on scene

---

---

---

---

---

---

---

19

### Module Two Discussion Questions



---

---

---

---

---

---

---

20

### Module Three



---

---

---

---

---

---

---

21

### Module Three Situation

- Negotiations with the gunman continue until gunshots are heard in the barricaded room. SWAT Team members enter the room to find the gunman with a self-inflicted gunshot wound. The two hostages appear to be unharmed.
- All patients have been transported off site.
- Police are beginning their forensic investigation. Forensics advises it will be at least 24-48 hours before they complete their investigation and can turn the scene back over to the facility.
- Media inquiries are continuing, and national media has picked up the story.

22

---

---

---

---

---

---

---

---

### Module 3 Key Issues

- Incident is under control
- Forensics investigation begins
- Unknown when re-entry can occur
- Incident continues to attract media attention

23

---

---

---

---

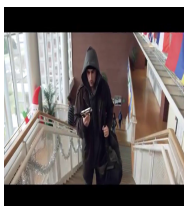
---

---

---

---

### Module Three Discussion Questions



24

---

---

---

---

---

---

---

---



## Hotwash and Closeout

- ▶ Three Ups and Three Downs
- ▶ Complete Participant Evaluation Form
- ▶ Full Scale Exercise to follow
- ▶ Additional Resources
  - ▶ <https://training.fema.gov/is/courseoverview.aspx?code=IS-907>
  - ▶ <https://www.dhs.gov/cisa/active-shooter-preparedness>

---

---

---

---

---

---

---

25

## Questions




---

---

---

---

---

---

---

26