

2020 MVP Exercise series



1

Exercise Guidelines

- Exercise is approximately three hours in duration.
- This exercise will be held in an open, low-stress, no-fault environment. Varying viewpoints, even disagreements, are expected.
- Respond to the scenario using your knowledge of current plans and capabilities (i.e., you may use only existing assets) and insights derived from your training.
- The exercise scenario is plausible, and events occur as they are presented.

2

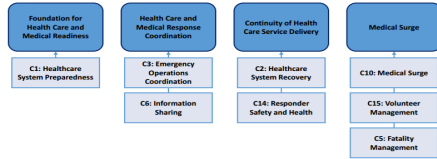
Core Capabilities

- Foundation for Healthcare and Medical Readiness
- Healthcare and Medical Response Coordination
- Continuity of Healthcare Service Delivery
- Medical Surge

3

ASPR 2017-2022 healthcare preparedness and response capabilities

Figure 1: Crosswalk of the 2012 and 2017-2022 Capabilities



4

Objective one/Foundation for Healthcare and Medical Readiness

- Ensure that Emergency Operations Plans (EOPs) are current and correct and that incident management and operational procedures have been exercised and documented.

5

Objective two/Healthcare and Medical Response Coordination

- Maintain situational awareness by gathering and sharing real-time information related to the emergency and the current state of the health care delivery system through coordination with the healthcare coalition.

6

Objective three/Continuity of Healthcare Service Delivery

- If agency or patient care areas are within flood areas, determine need for/priorities for either sheltering in place (SIP) or evacuation.
- Ensure key organization's functions are maintained throughout the emergency including the provision of care to existing and possibly new patients as well as staff and family members accompanying patients.

7

Objective four/Medical Surge

- Implement and manage medical surge operations through the continued sharing of resources across Health Care Coalition partners and the operational area.

8

Threat or Hazard



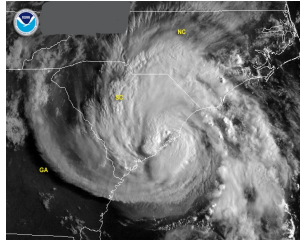
- Hurricane/tropical storm/flooding



9

Scenario

- Hurricane strikes the east coast making landfall in Charleston, South Carolina.
- The remnants move up the interior of South Carolina, North Carolina and spreads into Central Virginia with destructive winds and torrential rain.
- The storm stalls over our region for twenty-four hours before moving out into the Atlantic.



10

Exercise Structure & functional groups

- Module 1: Preparedness and Business Continuity
 - Module 2: Response
 - Module 3: Recovery/Restoration of Services
- Hospice and Home Health
 - Dialysis
 - Ambulatory Surgical Centers and Medical Clinics
 - Intermediate Care Facilities for Individuals with Intellectual Disabilities (ICF/IID)
 - Programs of All-Inclusive Care for the Elderly (PACE)

11

MODULE 1: PREPAREDNESS & BUSINESS CONTINUITY

- Hurricane Joann makes landfall as a Category 3 storm.
- The National Hurricane Center is predicting that it will head up the interior of North Carolina and enter the Central Region of Virginia in the next forty-eight hours.



12

MODULE 1: PREPAREDNESS & BUSINESS CONTINUITY KEY ISSUES

- Major Category 3 hurricane will slow to a tropical storm bringing with it strong winds and significant rainfall.
- The region has had an unusually wet season, with a record amount of rainfall saturating the soil and causing runoff directly into streams and rivers, causing small area floods.
- Major flooding will be a significant hazard with predictions that the tropical storm could stall over the region.

13

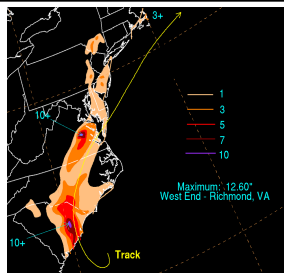
Questions

- Answer questions on Page 8 of your Situation Manual
- Record responses on the easel pads
- Choose a spokesperson to deliver responses
- You have approximately 20 minutes

14

MODULE 2: RESPONSE

- As predicted, Tropical Storm Joann has reached our region and appears to have stalled.
- Heavy rain is pounding the region and winds of 35mph gusting to 55mph are causing extensive damage.



15

MODULE 2: RESPONSE KEY ISSUES

- Tropical Storm Joann is pounding the region with heavy rain and wind.
- There are extensive power outages.
- Communications capability is being hampered by the storm.



16

Questions

- Answer questions on Page 10 of your Situation Manual
- Record responses on the easel pads
- Choose a spokesperson to deliver responses
- You have approximately 20 minutes

17

MODULE 3: RECOVERY/RESTORATION OF SERVICES

- The storm has moved off the Atlantic coast and has regained sufficient energy to become a Category 2 hurricane.
- In its wake, the region has suffered significant damage.
- The governor has declared a State of Emergency, activated the National Guard. The state EOC and all local EOCs have been fully activated.
- Numerous water rescues have been made by local fire departments and incident activity is extremely high.



18

MODULE 3: RECOVERY/RESTORATION OF SERVICES Key Issues

- The storm has drenched the region leaving a rainfall total of 10 inches.
- Many streets are impassable due to downed trees and utility services. I95 is impassable in both directions between the Belvidere exit and the entrance ramp to I64.
- Shelters are open throughout the region. There have been fatalities due to rapidly rising flood waters. Efforts to account for the missing are ongoing and it is feared that the death toll will rise.



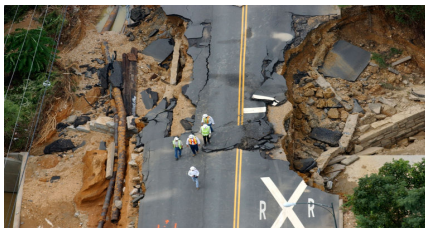
19

Questions

- Answer questions on Page 11 of your Situation Manual
- Record responses on the easel pads
- Choose a spokesperson to deliver responses
- You have approximately 20 minutes

20

Hot wash and ENDEX



21